

Home & Land Package



0411278102
LESTER HOPMAN

lester@crystelehomes.com.au



Lot 4

Seoul Rd Austral,
NSW 2179

Fixed Price
\$1,137,200

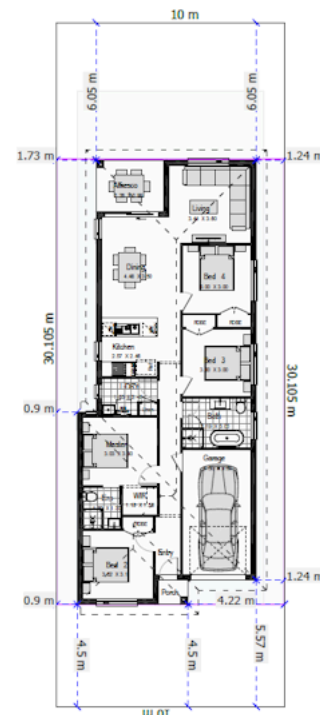
Norwich MK111

Contemporary, compact and cleverly designed, the Norwich brings family living into sharp focus.

Four bedrooms, a private master suite, two bathrooms and a single garage are all thoughtfully arranged for maximum flow and function, making it the perfect choice for families ready to start their next chapter in style.

Inclusions

- FIXED SITE COSTS
- BASIX
- Plain concrete driveway up to 30m² – excludes footpath
- Actron single phase ducted air-conditioning unit
- 2590mm high ceilings to ground floor only
- Full height tiling to Bathroom and Ensuite only
- Creative Collection Range – 20mm Stone to Kitchen
- 900mm – SS – Slide Out Rangehood – Recirculating
- 900mm – SS – Built-In Electric Oven Model
- 900mm – SS – Gas Cooktop
- Dishwasher
- Creative Collection range of glazed porcelain tiles to wet area floors
- Creative Collection range of glazed porcelain tiles to ground main floors OR 8mm Laminate to



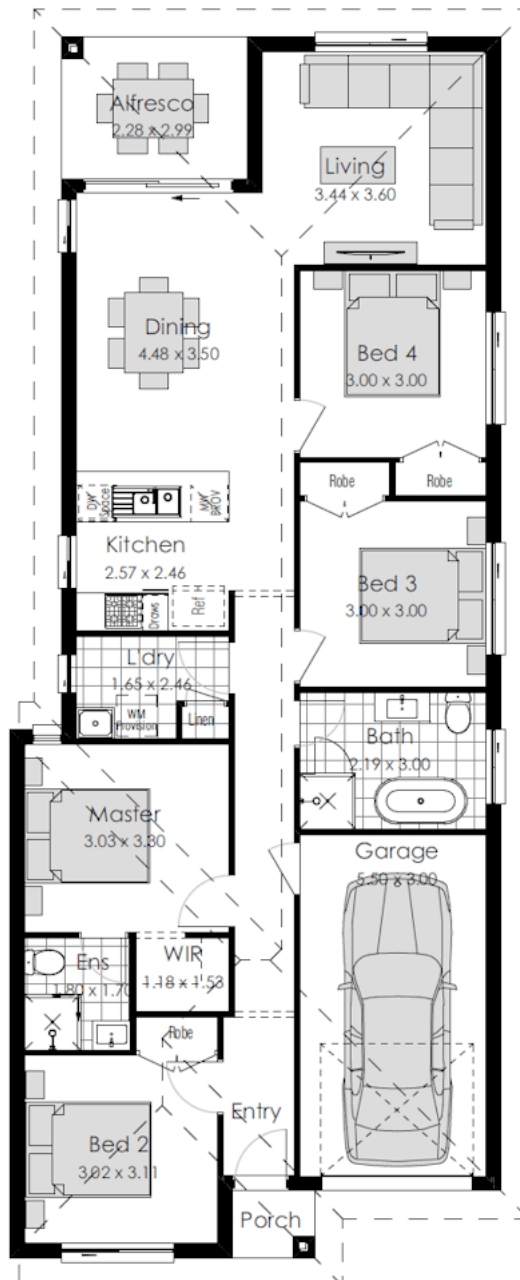
Lot 4



Land Area	301.0 m ²
Porch	1.43 m ²
Ground Floor	116.13 m ²
Total	142.98 m ²

Garage	18.6 m ²
Alfresco	Alfresco m ²
	m ²

Norwich MK111



Seoul Rd Austral, NSW 2179

0411278102

LESTER HOPMAN

lester@crystelehomes.com.au

All photographs, Facades, colour schemes, floor plans and dimensions are for illustrative purposes only and may vary slightly to the end product. Prices are based on Crystele Homes "Creative Collection" specifications. Crystele homes reserves the right to change prices without notice. Additional council fees may be payable. Due to individual estate requirements and council guidelines, some typical lot widths may vary and should be used for a guide only. For further terms and conditions please discuss with your Crystele homes sales consultants.

19-05-2026