

# Home & Land Package



0411278102  
LESTER HOPMAN  
lester@crystelehomes.com.au



## Lot 2208

Proposed Rd  
Gilead, NSW 2560

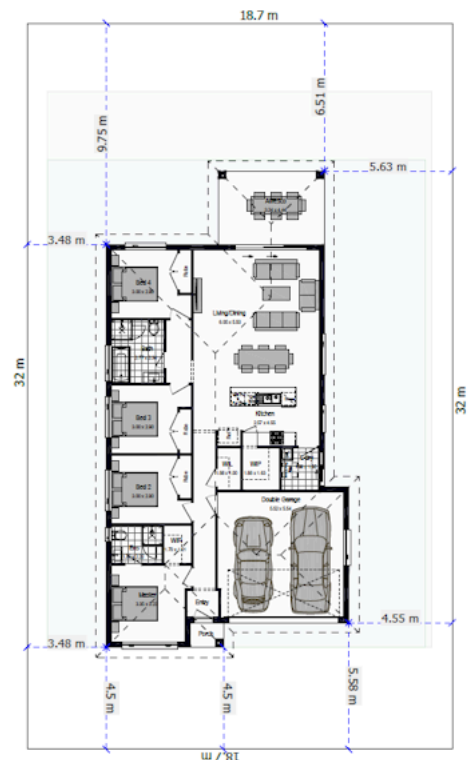
Fixed Price  
\$1,172,190

## MOONSTONE MK2

The Moonstone makes everyday living feel effortless. With a master suite at the front, a spacious open-plan kitchen with walk-in pantry, and a double garage, this smart design creates space for every family moment. Perfect for 12.5m frontages, the Moonstone blends contemporary style with practical living, offering a welcoming place to grow, gather and relax.

## Inclusions

- FIXED SITE COSTS
- BASIX
- Actron single phase ducted air-conditioning unit
- Plain concrete driveway up to 60m<sup>2</sup> – excludes footpath
- Designer Sink Mixer
- Finger pull cabinetry to overhead cupboards
- 2400mm high overhead kitchen wall cabinetry
- Soft close drawers and doors
- Creative Collection Range – 20mm Stone to Kitchen
- Plumbed cold water point to fridge space
- 900mm – SS – Gas Cooktop
- 900mm – SS – Built-In Electric Oven Model
- 900mm – SS – Slide Out Rangehood – Recirculating
- Dishwasher
- Designer Square Double Bowl Lay-on Sink



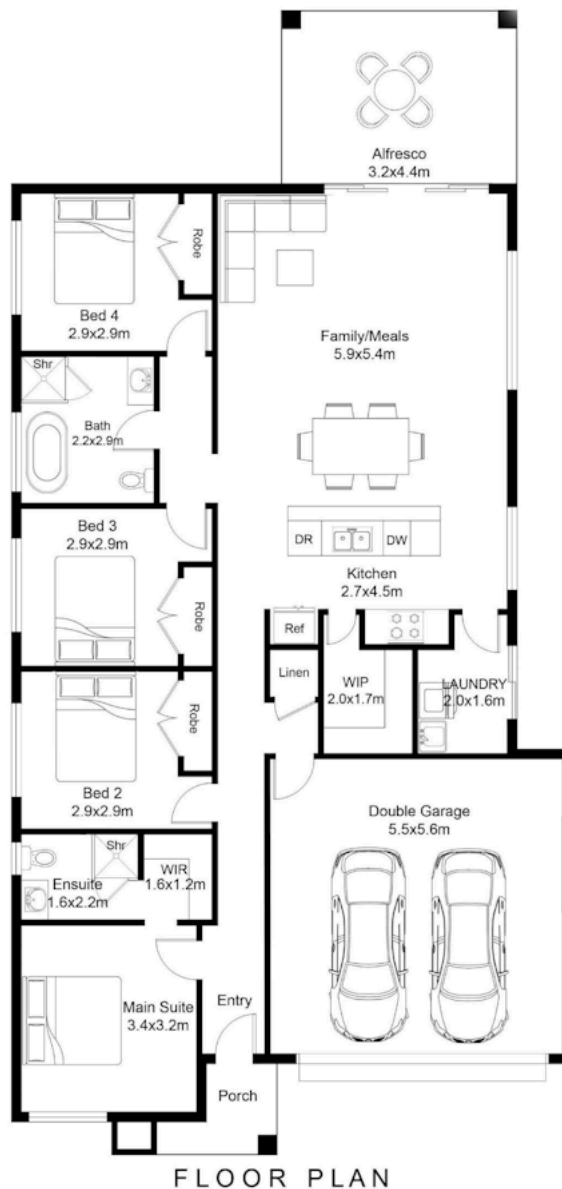
# Lot 2208



Land Area	597.0 m <sup>2</sup>
Ground Floor	136.96 m <sup>2</sup>
Garage	33.38 m <sup>2</sup>
Total	187.55 m <sup>2</sup>

Porch	2.82 m <sup>2</sup>
Alfresco	Alfresco m <sup>2</sup>
	m <sup>2</sup>

## MOONSTONE MK2



Proposed Rd Gilead, NSW 2560

0411278102

LESTER HOPMAN

lester@crystelehomes.com.au

All photographs, Facades, colour schemes, floor plans and dimensions are for illustrative purposes only and may vary slightly to the end product. Prices are based on Crystele Homes "Creative Collection" specifications. Crystele homes reserves the right to change prices without notice. Additional council fees may be payable. Due to individual estate requirements and council guidelines, some typical lot widths may vary and should be used for a guide only. For further terms and conditions please discuss with your Crystele homes sales consultants.

09-04-2026