

# Home & Land Package



0411278102  
LESTER HOPMAN

lester@crystelehomes.com.au



## Lot 157

Heath Rd  
Leppington, NSW  
2179

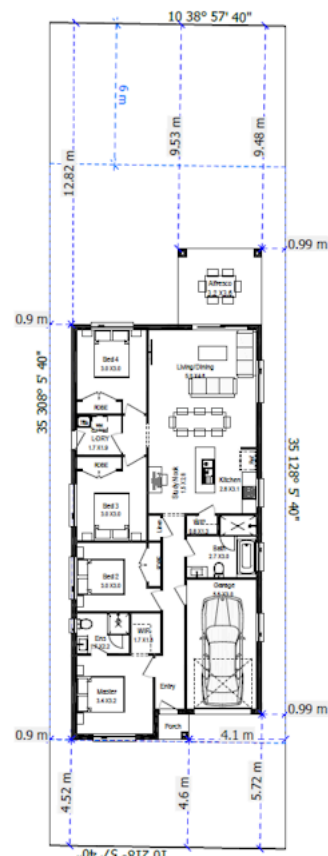
Fixed Price  
\$1,241,390

## CHELSEA MK2

Stylish, clever and welcoming, the Chelsea makes the most of every square metre. With four bedrooms, two bathrooms, an open-plan living zone, and a modern kitchen with walk-in pantry, this home is perfect for families wanting contemporary living on a 10m block. The Chelsea is proof that great things come in smart, beautifully designed spaces.

## Inclusions

- 2590mm high ceilings to ground floor only
- Full height tiling to Bathroom and Ensuite only
- Creative Collection range of glazed porcelain tiles to wet area floors
- Creative Collection range of glazed porcelain tiles to ground main floors OR 8mm Laminate to ground main floors
- 1500mm Freestanding Bath
- Tapware in Matte Black to Bathroom, Ensuite and Powder Room (House Design Specific)
- Accessories in Matte Black
- Wall Hung Vanities (House Design Specific)
- Semi-frameless shower screens
- Actron single phase ducted air-conditioning unit
- FIXED SITE COSTS
- BASIX



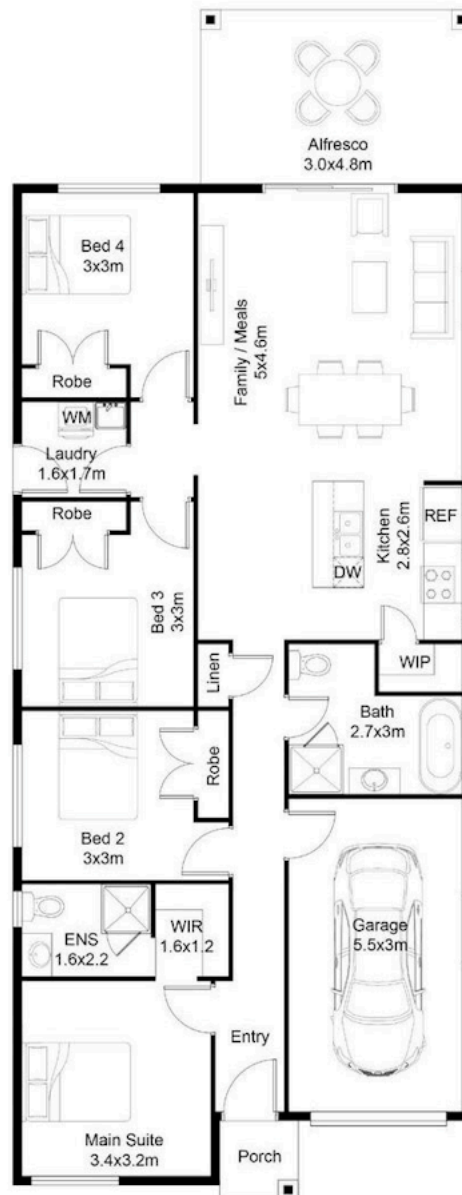
# Lot 157



<b>Land Area</b>	<b>350.0 m<sup>2</sup></b>
Ground floor	156.05 m <sup>2</sup>
Garage	18.6 m <sup>2</sup>
Total	156.05 m <sup>2</sup>

Porch	1.78 m <sup>2</sup>
Alfresco	Alfresco m <sup>2</sup>
	m <sup>2</sup>

## CHELSEA MK2



FLOOR PLAN

Heath Rd Leppington, NSW 2179

0411278102

LESTER HOPMAN

lester@crystelehomes.com.au

All photographs, Facades, colour schemes, floor plans and dimensions are for illustrative purposes only and may vary slightly to the end product. Prices are based on Crystele Homes "Creative Collection" specifications. Crystele homes reserves the right to change prices without notice. Additional council fees may be payable. Due to individual estate requirements and council guidelines, some typical lot widths may vary and should be used for a guide only. For further terms and conditions please discuss with your Crystele homes sales consultants.