

Home & Land Package

Crystele
HOMES



0411278102
LESTER HOPMAN

lester@crystelehomes.com.au



Lot 22

Tokyo Rd Austral,
NSW 2179

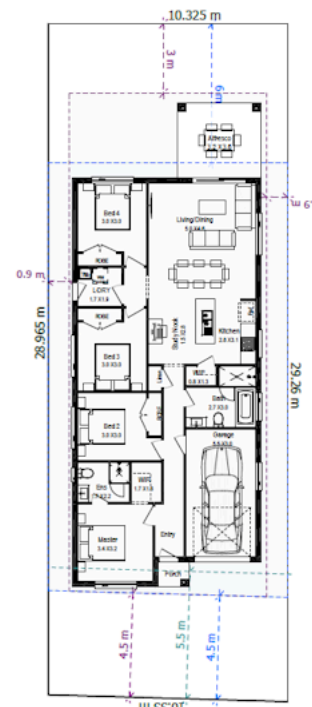
Fixed Price
\$1,117,200

CHELSEA MK2

Stylish, clever and welcoming, the Chelsea makes the most of every square metre. With four bedrooms, two bathrooms, an open-plan living zone, and a modern kitchen with walk-in pantry, this home is perfect for families wanting contemporary living on a 10m block. The Chelsea is proof that great things come in smart, beautifully designed spaces.

Inclusions

- FIXED SITE COSTS
- BASIX
- Plain concrete driveway up to 30m² – excludes footpath
- Actron single phase ducted air-conditioning unit
- 2590mm high ceilings to ground floor only
- Full height tiling to Bathroom and Ensuite only
- Creative Collection Range - 20mm Stone to Kitchen
- 900mm - SS - Slide Out Rangehood - Recirculating
- 900mm - SS - Gas Cooktop
- 900mm - SS - Built-In Electric Oven Model
- Dishwasher
- Creative Collection range of glazed porcelain tiles to wet area floors
- Creative Collection range of glazed porcelain tiles to ground main floors OR 8mm Laminate to



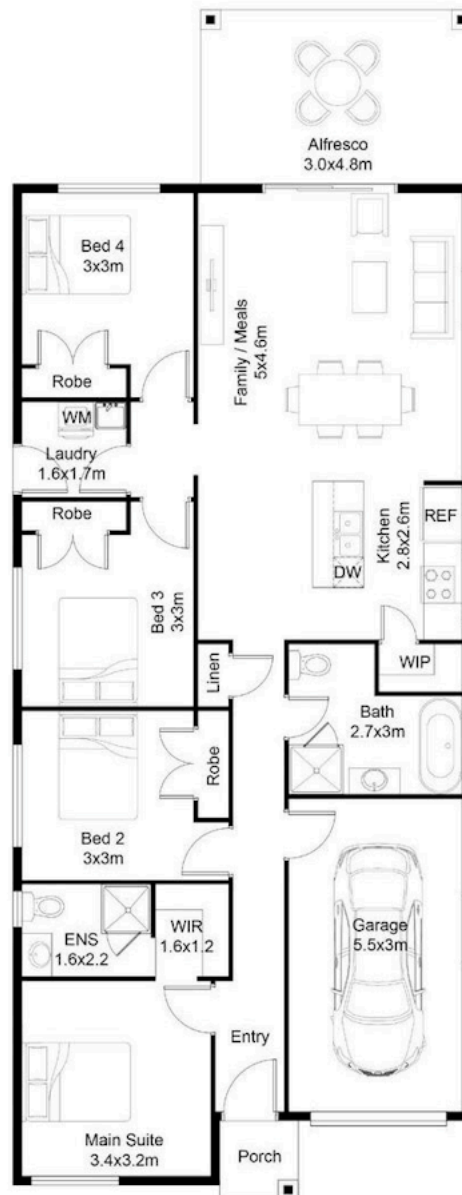
Lot 22



Land Area	300.0 m²
Ground floor	156.05 m ²
Garage	18.6 m ²
Total	156.05 m ²

Porch	1.78 m ²
Alfresco	Alfresco m ²
	m ²

CHELSEA MK2



FLOOR PLAN

Tokyo Rd Austral, NSW 2179

0411278102

LESTER HOPMAN

lester@crystelehomes.com.au

All photographs, Facades, colour schemes, floor plans and dimensions are for illustrative purposes only and may vary slightly to the end product. Prices are based on Crystele Homes "Creative Collection" specifications. Crystele homes reserves the right to change prices without notice. Additional council fees may be payable. Due to individual estate requirements and council guidelines, some typical lot widths may vary and should be used for a guide only. For further terms and conditions please discuss with your Crystele homes sales consultants.