

Home & Land Package



0411278102
LESTER HOPMAN

lester@crystelehomes.com.au



Lot 91

Camden Valley Way
Catherine Field,
NSW 2557

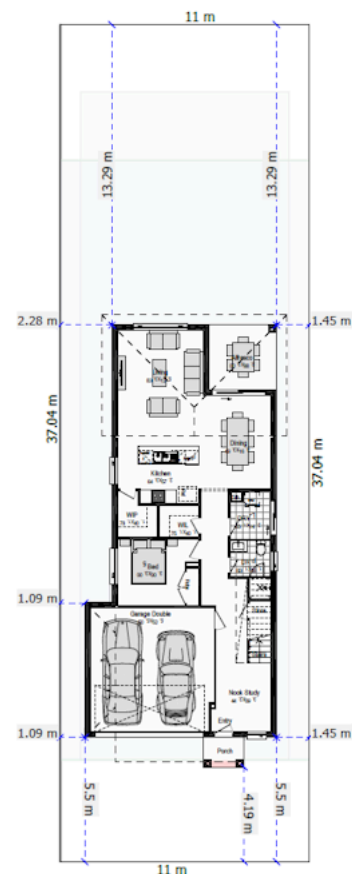
Fixed Price
\$1,314,400

EVE MK3

The Eve brings space, style and smart design together for growing families. Perfect for narrow 10m blocks, this home features a study nook, spacious open-plan living with a walk-in pantry, and an upstairs lounge ideal for kids' play or quiet retreat. Thoughtful storage solutions and a flowing layout make everyday living easy and inviting.

Inclusions

- FIXED SITE COSTS
- BASIX
- Plain concrete driveway up to 60m² – excludes footpath
- Actron single phase ducted air-conditioning unit
- 2590mm high ceilings to ground floor only
- Full height tiling to Bathroom and Ensuite only
- Creative Collection Range – 20mm Stone to Kitchen
- Designer Sink Mixer
- 900mm – SS – Built-In Electric Oven Model
- 900mm – SS – Gas Cooktop
- 900mm – SS – Slide Out Rangehood – Recirculating
- Dishwasher
- Finger pull cabinetry to overhead cupboards
- 2400mm high overhead kitchen wall cabinetry
- Soft close drawers and doors



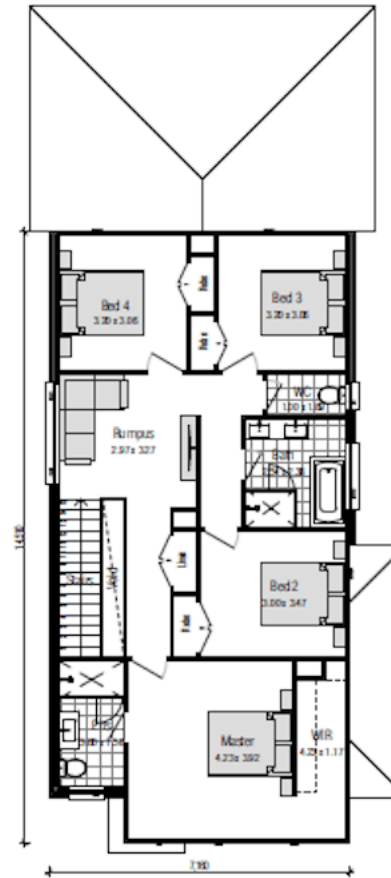
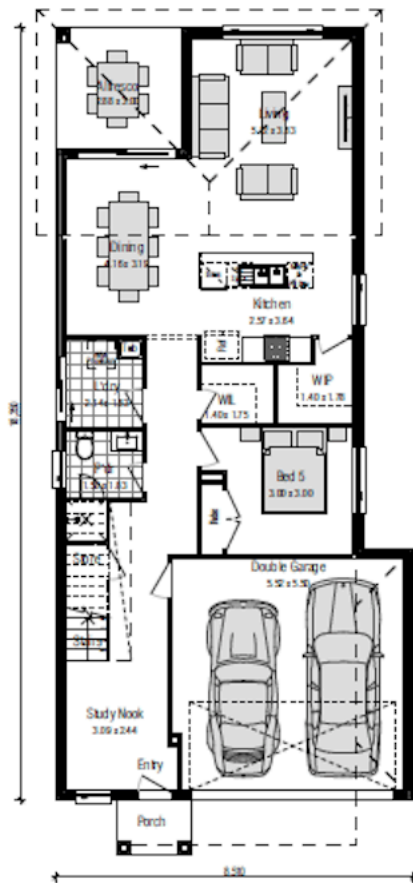
Lot 91



Land Area	405.0 m ²
Ground Floor	99.77 m ²
First Floor	103.06 m ²
Total	248.0 m ²

Garage	32.92 m ²
Alfresco	Alfresco m ²
Porch	Porch m ²

EVE MK3



Camden Valley Way Catherine Field, NSW 2557

0411278102

LESTER HOPMAN

lester@crystelehomes.com.au

All photographs, Facades, colour schemes, floor plans and dimensions are for illustrative purposes only and may vary slightly to the end product. Prices are based on Crystele Homes "Creative Collection" specifications. Crystele homes reserves the right to change prices without notice. Additional council fees may be payable. Due to individual estate requirements and council guidelines, some typical lot widths may vary and should be used for a guide only. For further terms and conditions please discuss with your Crystele homes sales consultants.

07-05-2026