

# Home & Land Package



0411278102  
LESTER HOPMAN

lester@crystelehomes.com.au



## Lot 1

Violenta Way  
Rosemeadow, NSW  
2560

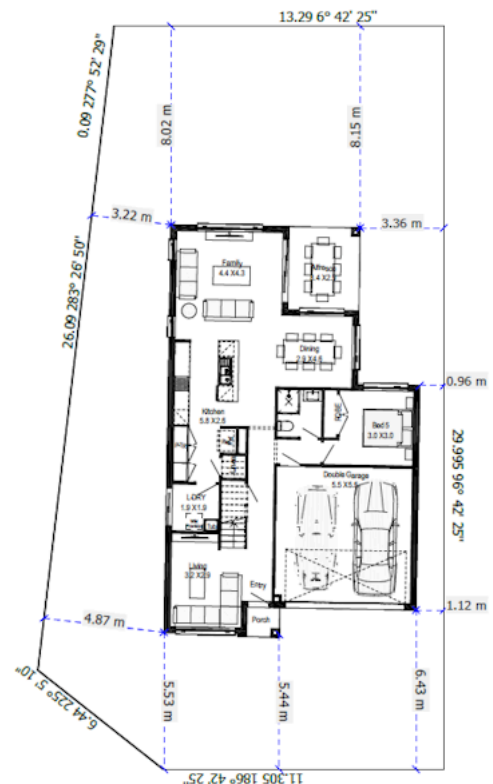
Fixed Price  
\$1,251,200

## LONDON MK111

Featuring a seamless design, boasting open-plan living, the London is the ideal choice for families looking for spacious style on a 12.5m frontage lot. With a division between living areas, five bedrooms, three bathrooms and a double garage, the London offers a new, modern style double-storey home that has room for a family to grow.

### Inclusions

- FIXED SITE COSTS
- BASIX
- Plain concrete driveway up to 60m<sup>2</sup> – excludes footpath
- Actron single phase ducted air-conditioning unit
- 2600mm high ceilings to ground floor only
- Full height tiling to Bathroom and Ensuite only
- Creative Collection Range - 20mm Stone to Kitchen
- 900mm - SS - Gas Cooktop
- 900mm - SS - Built-In Electric Oven Model
- 900mm - SS - Slide Out Rangehood - Recirculating
- Dishwasher
- Creative Collection range of glazed porcelain tiles to wet area floors
- Creative Collection range of glazed porcelain tiles to ground main floors OR 8mm Laminate to



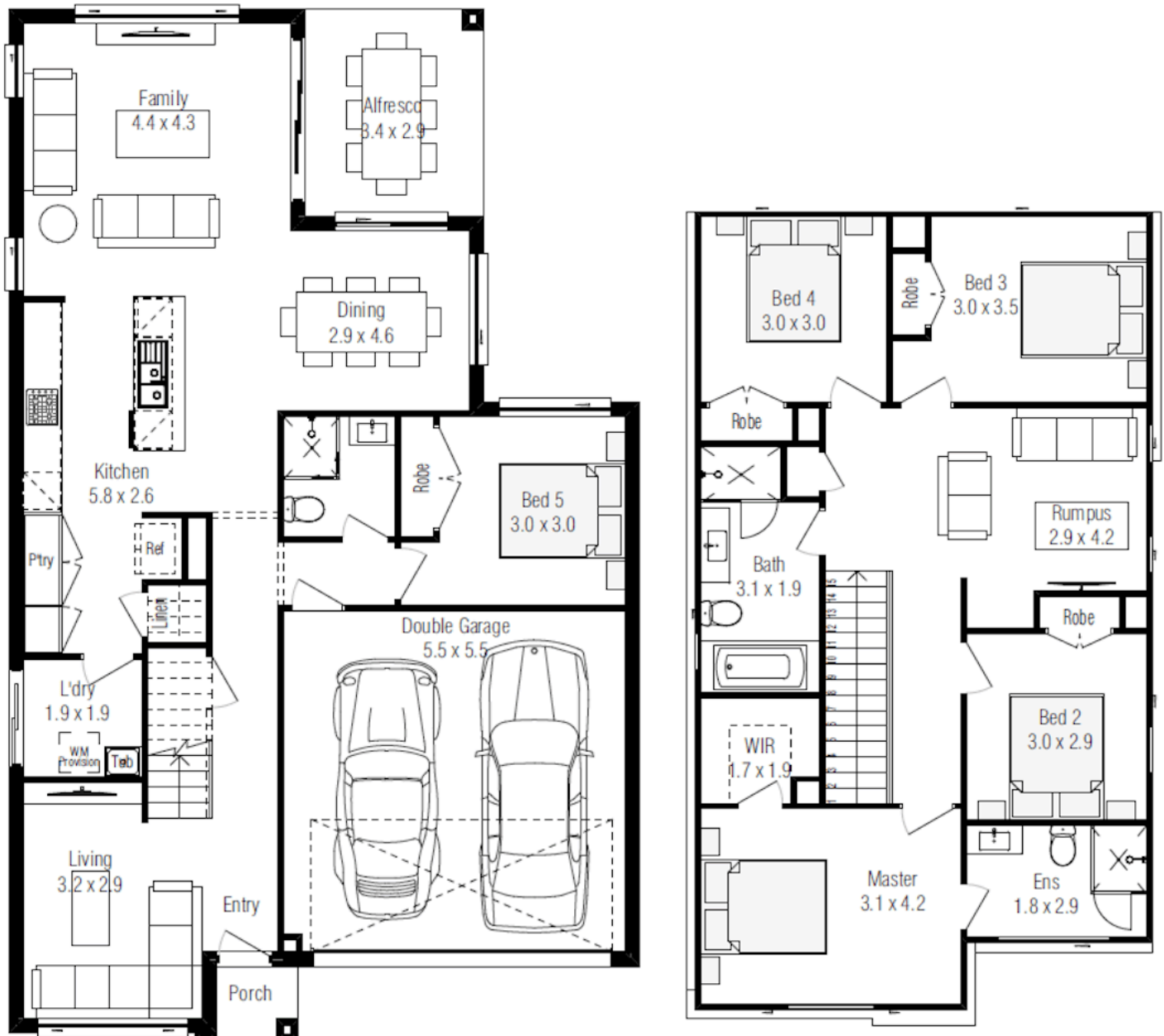
# Lot 1



Land Area	450.0 m <sup>2</sup>
Ground Floor	102.53 m <sup>2</sup>
First Floor	91.76 m <sup>2</sup>
Total	238.63 m <sup>2</sup>

Garage	33.08 m <sup>2</sup>
Alfresco	Alfresco m <sup>2</sup>
Porch	Porch m <sup>2</sup>

## LONDON MK111



Violenta Way Rosemeadow, NSW 2560

0411278102

LESTER HOPMAN

lester@crystelehomes.com.au

All photographs, Facades, colour schemes, floor plans and dimensions are for illustrative purposes only and may vary slightly to the end product. Prices are based on Crystele Homes "Creative Collection" specifications. Crystele homes reserves the right to change prices without notice. Additional council fees may be payable. Due to individual estate requirements and council guidelines, some typical lot widths may vary and should be used for a guide only. For further terms and conditions please discuss with your Crystele homes sales consultants.

08-05-2026